



SOARING TO
Greater Heights
OF ACADEMIC
ACHIEVEMENT

2023 ANNUAL REPORT



TABLE OF Contents

- 3 MESSAGE FROM THE PRESIDENT
- 4 MESSAGE FROM THE TREASURER
- 5 FINANCIALS
- 7 PROGRAMS
 - Endowments 7
 - Fellowships 12
 - Undergraduate 13
 - Community Assistance 14
 - Gift Matching 16
- 17 AWARDS
- 18 DONORS
- 25 LEADERSHIP
- 26 STAFF



Breyana Robinson
 2023 Undergraduate Scholar

OUR MISSION

The mission of the Alpha Kappa Alpha Educational Advancement Foundation, Inc.[®] is to promote lifelong learning. This is accomplished by securing charitable contributions, gifts, and endowed funds to award scholarships, fellowships, and grants.



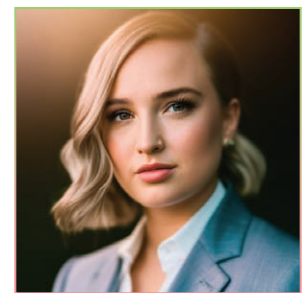
Denisha McPherson
 2023 Graduate Scholar

OUR VISION

The Educational Advancement Foundation[®] sees the consistent and ever-present gap in funding for STEM, music, the arts, youth enrichment, and other critical development activities that are vital to supporting our youth and developing well-rounded individuals. We use our dollars to help college students to complete their education, as seed money for charitable endeavors, and to support and expand community service projects. Through our mission, our vision is to perpetually reaffirm our commitment to the financial support of educational endeavors.



Avery Thomas
 2023 Undergraduate Scholar



Logan Hamilton
 2023 Graduate Scholar

PICTURED ON THE COVER

TOP ROW (L-R):

Christany Liggins, 2023 Graduate Scholar
Arthur Harris, 2023 Undergraduate Scholar

MIDDLE ROW (L-R):

Dana Lander, 2023 Graduate Scholar
Camryn Torrence, 2023 Undergraduate Scholar

BOTTOM ROW (L-R):

Aaron Abrishami, 2023 Graduate Scholar
Arnell Kinney, 2023 Graduate Scholar

MESSAGE FROM THE ...

President



As we head into 2025, I am excited to share with you our latest annual report of the Alpha Kappa Alpha Educational Advancement Foundation® (EAF).

Alpha Kappa Alpha Sorority, Incorporated® is rooted in the tenet of *service to all mankind* and the Foundation is a valued vehicle which allows us to extend our focus in the areas of scholarship, education, and community-building. As the first sorority for college-educated African American women, we know that success is paved through the pathway of higher education. Scholarship and success are in our DNA.

So, we are focused and intentional about providing opportunities for individuals of any nationality or background to SOAR through educational obtainment. With each and every scholarship and grant, we are sowing into individuals and community organizations so they can ignite the torch of excellence, ingenuity, imagination, and higher heights of achievement in their communities.

EAF has been **“Soaring to Greater Heights of Academic Achievement”** by growing assets that are currently more than \$27 million. To date, here are some key metrics that show our growth:

- MEMBERSHIP - 94,514 members
- NET ASSETS - \$27.3 million
- AWARDED more than **\$1.2 million** in scholarships/endowments and **\$32,000** to more than 580 students and community organizations.

As you read this annual report, we hope it offers a valuable understanding of what we do, the students and groups we serve, and the impact of our official philanthropic arm on our local communities.

To all of our members, donors, supporters, and friends, I'd like to personally say “thank you” for supporting our vision and our work. Every dollar donated lifts us to greater heights of philanthropy and positively impacts the lives of so many.

Yours in Service,

A handwritten signature in black ink that reads "Danette Anthony Reed". The signature is written in a cursive, flowing style.

Danette Anthony Reed

President, Alpha Kappa Alpha Educational Advancement Foundation, Inc.®

International President and Chief Executive Officer, Alpha Kappa Alpha Sorority, Inc.®

MESSAGE FROM THE ...

Treasurer



Greetings!

It is my pleasure to present the Treasurer's Report for the Alpha Kappa Alpha Educational Advancement Foundation, Inc.® ("EAF" or "the Foundation") for the year ended December 31, 2023.

Total Assets of the Foundation were **\$27.5 million**, representing a 20% increase over the \$22.9 million reported at the end of 2022. Liabilities totaled \$78,290 and consisted mainly of \$35,744 of scholarships payable, \$42,211 of accounts payable (including accrued payroll and vacation), and less than \$400 of capital lease obligations. Net Assets totaled \$27.4 million at the end of 2023; a 21.6% increase from \$22.5 million in 2022. The Foundation ended 2023 with Total Revenues of **\$7.6 million**, a 58% increase over 2022. Expenses for the year were \$2.7 million, which was a 63% decrease over the year ended 12/31/2022. Contributions experienced a growth rate of 10%. Membership Fees and Endowments decreased slightly year over year.

INVESTMENT PERFORMANCE

Investments are the largest asset totaling \$21.8 million, which make up 79.6% of Total Net Assets. The EAF investment portfolio rebounded during 2023 and continues to meet its performance targets. Yielding \$2.5 million in investment income during the year, the portfolio continues to provide a positive yield to each eligible endowment account based on positive net earnings less a slight inflation factor. Careful financial stewardship, portfolio diversification and strong financial results contribute positively to the process by which the Foundation's mission to support lifelong learning is achieved.

ENDOWMENTS

Total endowments managed by EAF grew slight to 483 in 2023 from 475 at the end of 2022. The permanently restricted, capitalized portfolio increased 4% to 382 from 366. Steady growth in the capitalized endowment portfolio provides the foundation a solid funding base to award scholarships and community assistance grants in perpetuity. Increases in annual giving across all EAF programs enable us to support the educational goals of students around the world.

We are **"Soaring to Greater Heights of Academic Achievement"** with your continuing support. Thank you for allowing us to support our mission to serve students and communities pursuing educational endeavors.

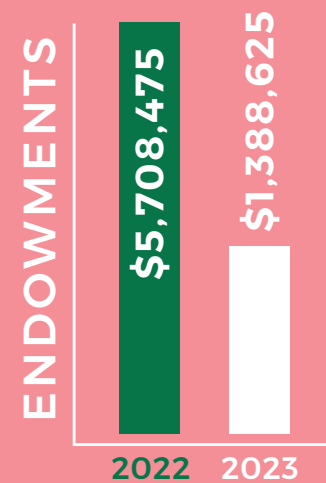
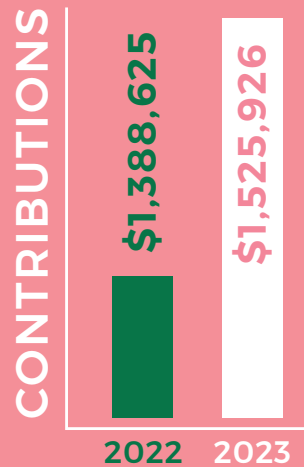
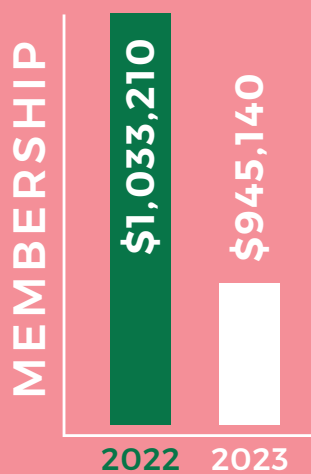
Karla A. Hall

Treasurer

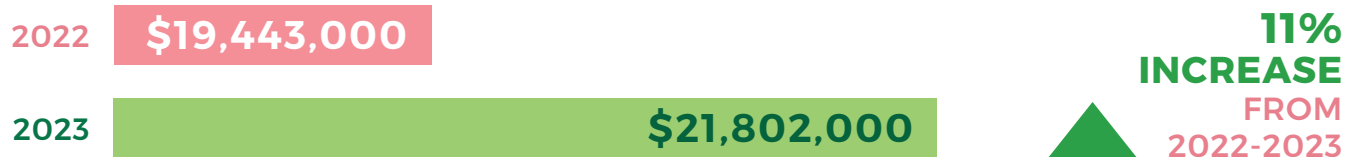
Alpha Kappa Alpha Educational Advancement Foundation, Inc.®

2023 FINANCIALS*

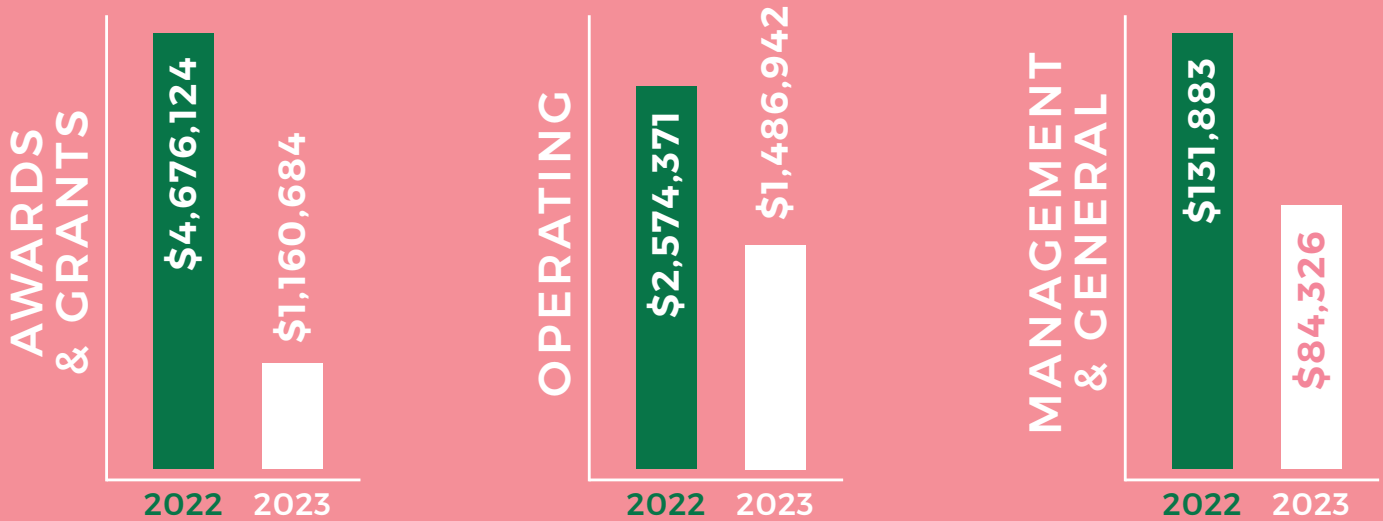
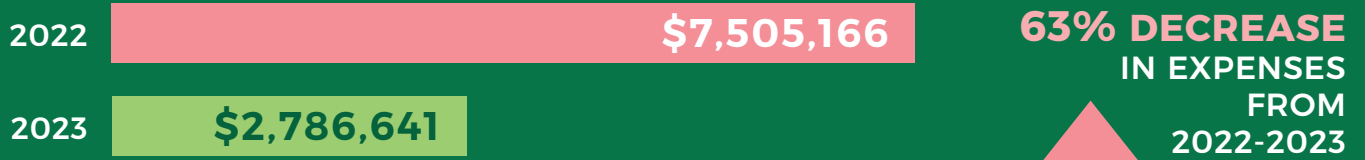
Total Revenues



Total Investments



Total Expenses



Total Assets



GREATER HEIGHTS IN ... Endowments

2023 CAPITALIZED ENDOWMENTS

Adkins Family Foundation- Leah's Legacy Endowed Scholarship Fund

Adrienne Pope-Kelly Washington Endowment Fund

Alabama HBCU Scholarship Fund

Alberta G. Jones Endowment Fund

Alice Boyd Burton Alpha Rho Omega Merit Scholarship Fund

Alice S. Marriott Scholarship Fund

Alice Thomas Motts Trust Scholarship Fund

Alonzetta Landrum-Sims Investment in Our Future Scholarship Fund

Alpha Alpha Eta Omega Endowment Fund

Alpha Alpha Lambda Omega Endowment Fund

Alpha Delta Omega Endowment Fund

Alpha Kappa Alpha Founders Fund

Alpha Kappa Alpha Incorporators Fund

Alpha Lambda Omega Endowment Fund

Alpha Pi Wolfe Sisters: Nellie Gaylord, Ida Ross, Marjorie L. Ushery

Alpha Rho Omega Chapter Endowment Fund



Avery Bolden

2023 Undergraduate Scholar



Anna Collins

2023 Undergraduate Scholar

Alpha Rho Undergraduate Endowment Fund

Anita Maria Black Trust Endowment Fund

Ann Colbert Battles Endowment Fund

Ann Elizabeth Laury Jones Scholarship Fund

Anne Mitchem Davis Endowment Fund

Anonymous Scholarship Fund

Archalene Amos Martin Piano Artistry Award

Ashley Tannehill Memorial Scholarship Fund

Barbara A. McKinzie/Naomi Moses Scholarship Fund

Barbara K. Phillips Endowment Fund

Barbara W. Davis Endowed Fund

Bernice Gordon Greene Educational Leadership Endowment Fund

Bernice I. Sumlin EAF Scholarship Fund

Beta Epsilon Omega Scholarship Fund

Beta Kappa Omega Endowment Fund

C. Connor and O. Brown Endowment Fund

Caddle Family Undergraduate Endowment For Education Fund

Capturing The Promise Endowment Fund

Cardelia Patricia West Memorial Scholarship Fund

Carmelita Caruth Smith Post Graduate Endowment For Women

Carmen E. Fowler Fair Scholarship Fund

Carol R. and Otwa L. Dixon Scholarship Fund

Caroline L. Lattimore Endowment Fund

Carolyn G. Randolph Best The Best You Endowment Fund

Carolyn House Stewart Endowment Fund

Carr Marshall Family Endowment Fund

Carrie J. Clark Endowed Scholarship Fund

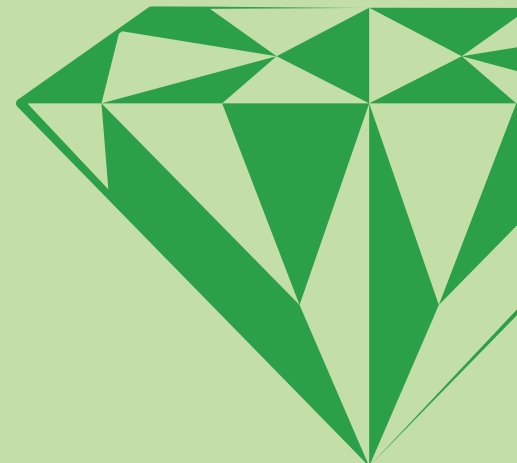
Central Region Cluster I Endowment Fund

Charlene Truitt Nelson Endowed Scholarship Fund

Chelle Luper Wilson Endowment Fund

EAF® offers members, organizations, and corporations an excellent opportunity to support our mission in perpetuity through our Endowment Program. Endowments are contributions of \$25,000 or more placed into a restricted fund, administered by EAF, and used solely for scholarship awards. Only the interest and dividends are used for awards – the principal is never touched – to provide a continuous source of scholarship funds over the years.

Endowment funds may be established to honor the memory a loved one or friend ... to support a personal commitment ... to support a specific profession ... and other criteria the donor chooses. Through the specific guidelines established for awarding scholarship funds, donors can reaffirm their own personal commitments to lifelong learning.





Andrew Jones
2023 Undergraduate Scholar



Leslie Huang
2023 Graduate Scholar



Courtney Hairston
2023 Undergraduate Scholar

Chi Alpha Omega Endowment Fund
Chi Zeta Omega Charter
Members Endowment Fund
Clara McCrae Hines Scholarship Fund
Claronelle Smith Griffin
Endowment Fund
Claudia Silas Scholarship Fund
Coalition to Salute America's
Heroes Endowed Fund
Collier Family Legacy Endowment Fund
Constance K. Holland Endowment Fund
Cora Wesley Phillips Fellowship Fund
Cornelia Harris Banks & Sarah
Harris Banks Endowment Fund
Crystal and Eugene Sewell
Scholarship Fund
Cultivated Pearls of South East
Georgia Endowment Fund
Cynthia Duke Cox Hudley
Endowment Fund
Cynthia J. Thomas Finch
Endowment Fund
Daffney A. Henry Epsilon Zeta
Chapter Endowment Fund

Daffney A. Henry Huston-
Tillotson University
Danette Anthony Reed Endowment Fund
Dansby Family Scholarship Fund
Daphne T. Porter Memorial
Scholarship Fund
David and Donna Winn Educational
Scholarship Endowment Fund
Deborah C. and Lindsey E.
Brittain Endowment Fund
Delorise A. Gines Building
H.O.P.E. Endowment Fund
Delta Epsilon Omega Chapter
Endowed Fund
Delta Phi Omega Bea Bailey
Scholarship Fund
Delta Tau Omega-Dorothy Kennedy
and L. Margaret Groves Keepers of
the Dream Scholarship Fund
Denise Foster-Williams Fund
Deralyn Riles Davis Endowment Fund
Diamond Jubilee Pearls
Foundation Endowment Fund
Diana G. Shipley Endowment Fund
Dolores A. Sturdivant Endowment Fund
Dolores J. Lindsay Scholarship Fund
Dolores Morton Spriggs
Endowment Fund
Doris (Dee) Kemp Endowed
Scholarship Fund
Doris J. Nunn Terry Endowment Fund
Doris Jean Welch Endowment Fund
Doris R. Asbury Endowment Fund
Doris S. Parker Endowment Fund
Dorothy Buckhanan Wilson
Endowment for Careers in Business
Dorothy M. Hackney Endowed Fund
Dorothy Reid Arnold Scholarship Fund
Dorothy S. Johnson Endowment Fund
Dr. C. Edith Booker Endowed
Scholarship Fund
Dr. Christina R. Brown/Dr. Marva
Mizell Price/Dr. LeShawndra N. Price
Endowed Legacy Scholarship Fund
Dr. Eva Lois Evans Scholarship Fund
Dr. Franzella W. Buchanan
Scholarship Fund
Dr. Glenda Baskin Glover
Endowment Fund
Dr. Gloria Stephens Smith
Scholarship Fund
Dr. Julia V. Clark STEM Scholarship
Dr. Laura Noble Banks-Reed
Endowment Fund
Dr. Mabel Bentley Perry &
Dr. Claude Albert Perry Sr.
Endowed Education Scholarship

Dr. Mae C. Jemison Science
& Technology Award
Dr. Olivia Letts Commitment to
the Dream Endowment Fund
Dr. Paula J. Fleshman and Family
Endowed STEAM Scholarship Fund
Dr. Polly Sparks Turner Health
Professions Endowment Fund
Dr. Rodelia A. Glasco Endowed Fund
Dr. Savannah C. Jones Scholarship
Endowment Fund
Dr. Shirley A. Jackson Scholarship Fund
Dr. Yvonne Barnett and Dr. Rhoneise
Barnett-Smith, MD Endowed
Legacy Scholarship Fund
E. Alma Flagg-Caroline
Williams Endowed Fund
Edith Kelly-Green Endowed
Scholarship Fund
Edna Kimbrough Sheridan
Legacy Endowment Fund
Edna Smoot Griffin Scholarship Fund
Elicia Peagues Spearman, Esq.
"Our Voices Matter F.I.R.S.T." Fund
Ella Springs Jones EAF Scholarship Fund
Elsie Lavonne Lewis Scholarship Fund
Emma Lily Henderson Endowment Fund
Epsilon Lambda Chapter
Endowment Fund
Epsilon Nu Omega Endowment Fund
Epsilon Rho Alumnae Scholarship
Endowment Fund
Erma W. Barron Endowment Fund
Ernestine B. Bivens and Dr. Mabel
B. Perry Endowed Fund
Eta Upsilon Omega Endowed
Scholarship Fund
Ethel Hedgemon Lyle Leadership Fund
Ethel Jones Mowbray Endowed Fund
Evelyn Foster Hamilton Endowment Fund
Evelyn Sample-Oates H.O.P.E
Scholarship Fund
ExxonMobil Alpha Kappa Alpha Sorority
Employee STEM Endowment Fund
Faye B. Bryant Excellence
Scholarship Fund
Felicia Marianne Wright
Endowed Scholarship Fund
Flenorl & Kelly Green Endowed Fund
Flossie M. Dedmond Educational Fund
Forever Rose Memorial Scholarship Fund
Frankie E. Ledbetter Scholarship Fund
Freddie Groomes-McLendon
Scholarship Fund
Frederica Wilson Endowed Fund
Gamma Kappa Chapter
Endowed Scholarship Fund

Gamma Omega/Alberta Gantt/
Mattie Harvey Scholarship Fund

Gamma Rho Omega
Chapter Scholarship

Gamma Zeta Omega Endowment Fund

Gene Ann Polk-Horne Endowment Fund

Georgia Gross Kirby Memorial
Scholarship Fund

Giselé M. Casanova Endowment Fund

Gizette Canegata Thomas
Endowment Fund

Gloria Harper Dickinson
International Travel Endowment

Grace Strauther Endowment Fund

Green-Alpha Beta-Communications Fund

Gwendolyn & Schylbea J.
Hopkins Endowment Fund

Gwendolyn Gaston Brinkley
Scholarship Fund

Gwendolyn Gilbert Shorter
EAF Scholarship

Gwendolyn J. Brinkley Endowment Fund

Gwendolyn L. Kirtley Greater
Together Endowment

Harriet Josephine Terry Scholarship

Hattie B. Wills Endowed Scholarship Fund

Helen Cromer Cooper Endowment Fund

Hessley J. Hempstead II Black
Men in Construction Fund

Hilda Wilder Scholarship Fund

Horace and Charles Smith Family
Heritage Scholarship Fund

Ida K. Martin Endowed Scholarship Fund

Ida L. Jackson Scholarship Fund

Idell S. Pugh Endowment Fund

Imani Pearls Community Development
Foundation Scholarship

Iota Lambda Omega Chapter
Scholarship Fund

Iota Zeta Omega Scholarship

Irene Westbrooks McCollom
Endowment Fund

Ivy Vine Charities, Incorporated
Scholarship Endowment Fund

J. Marjory Jackson Performing
Arts Scholarship

Jacqueline & Philip Kane Endowed Fund

Jacqueline A. Rose Scholarship Fund

Jacqueline O. Dansby Endowment Fund

Jameseva Marshall Webb
Endowment Fund

Janet Jones Ballard Endowed Fund

Jenell Ross Entrepreneurial Fund

Jennifer King Congleton
Endowment Fund

Jessie Reasor Zander Endowment Fund

Jo Celeste Pettway Endowment Fund

John and Bella Russell
Honorarium Endowment

Johnella H. Martin Educational
Endowment Fund

Johnetta Randolph Haley
Endowment Fund

Jones/Holloway/Rigsby Endowment Fund

Joy Elaine Daley Endowment Fund

Joya T. Hayes Endowment Fund

Joyce Green Barlow Endowment Fund

Joyce Henderson Endowment Fund

Joyce V. Austin Scholarship Fund

Juanita Sims Doty Endowed Fund

Kappa Lambda Omega-Meharry
Medical College Endowment Fund

Kappa Omega Endowment Fund

Katherine Goble Johnson
STEM Endowment Fund

Kathleen Hill Dyer Fellowship Fund

Kathy Walker Steele Endowment Fund

Katina Semien Political Science
& Pre-Law Scholarship

Keisha Wilson Tanner and Chelsea
Tanner Scholarship Endowment Fund

Klein Street Kids Trailblazers
Endowment Fund

Kristel A. Johnson Endowment Fund

La Shawn R. Stanton Endowment Fund

Lambda Alpha Omega Endowed Fund

Lambda Heritage Endowment Fund

Lane College Endowed Scholarship Fund

Larry & Carolyn Suarez Fund for
Business and Entrepreneurship

Larzette G. Hale Wilson/Eva L.
Evans Endowment Fund

LaVern S. Tarkington Endowment Fund

Laverna Williams Johnson
Endowed Scholarship Fund

Leadership Fellows Boule/ Leadership
Seminar Assistance Fund

Leadership Fellows Legacy Fund

Legacy of Pearls Endowment Fund

Lehia Anderson Bradby Memorial
Endowment Fund

Leona H. Dotson Women in
Science, Technology, Engineering
& Math (STEM) Scholarship

Linda Groomes Endowment Fund

Linda Henry Gilliam Endowment Fund

Linda Marie White Endowed
Scholarship Fund

Living Legends Grant

Loann Honesty King Endowment Fund

Lois Mailou Jones Fine Arts Fund

Lorraine Griffin Johnson
Endowment Fund

Lorraine R. Green Endowed Fund

Lucille Ellis Floyd and Zeta Xi Omega
Chapter Endowed Scholarship Fund

Lucille Johnson Piggott
Endowed Scholarship

Lucille M. Brown Endowment Fund

Lucretia Payton Stewart
Endowment Fund

Lucy Schmudde Memorial Fund

Lueburda Jamison Myers
Endowed Scholarship Fund

Lula Lang Jeter Endowment Fund

M. L. Matthew Legacy Fund For
Excellent Scholarly Performance

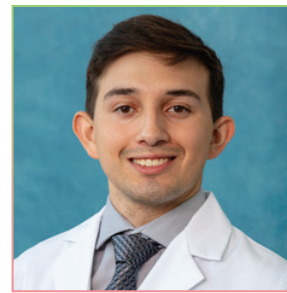
Madam Formers for Service and
Education Endowment Fund

Maggiann Whatley Green
Scholarship Fund

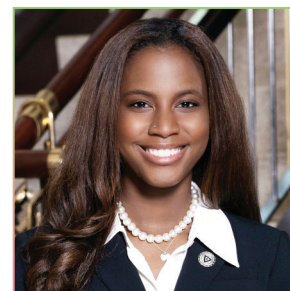
Mamie McKnight / Ginger McKnight
Chavers Graduate Scholarship

Marcletta R. Kerr Endowment Fund

Marilyn Glenn Blackmon
Endowment Fund



David Silva
2023 Graduate Scholar



Kennedy Ridley
2023 Undergraduate Scholar



Brooke Mangano
2023 Undergraduate Scholar

Marjorie H. & Franka H. Young
Scholarship Fund

Marjorie H. Parker Endowment
for Careers in Archives

Marsha Lewis Brown Endowment Fund

Martha Martin Trust-Ivy
Endowment Incorporated

Martha Perine Beard Endowment Fund

Marva J. Lee Endowment Fund

Mary B. Conner Educational Endowment

Mary Bentley Lamar Caring
for Those Who Care Fund

Mary F. Williams Teacher
Education Scholarship Fund

Mary Hogan Smith Endowed
Scholarship Fund

Mary Louise Williams Scholarship
Endowment Fund

Mary Shy Scott Arts Endowment Fund

Marye Jeffries Endowment Fund

Mattelia Grays-Julia Purnell
Endowment Fund

Maxine L. Black Endowed
Scholarship Fund



Amelia Scherling
2023 Undergraduate Scholar



Christian Taylor
2023 Undergraduate Scholar



Jalisha Gause
2023 Graduate Scholar

Melanie C. Jones South Eastern
Regaion Undergraduate Endowment

Meredith L. Henderson Endowment Fund

Mid-Atlantic Region Scholarship Fund

Mikayla C. Fishburne Scholarship
Endowment Fund

Mildred Logan Taylor Endowed
Scholarship Fund

Mildred T. Kitchens / Maxine W.
Thurmond Education Endowment Fund

Miss Pearl Soror Anna Adams
Mims HBCU Scholarship Fund

Mitzi Dease Paige Endowment Fund

"Monarch Awards Foundation
of Xi Nu Omega Chapter"

Monica Kaufman Pearson Mass
Communications Endowment Fund

Mozel Jenkins Spriggs Scholarship Fund

Mu Kappa Omega / Julia F.
Thompson, Inc. Scholarship Fund

Mu Lambda Omega Endowment Fund

Nadine C. Bonds Endowment Fund

Nadine Vargas Stewart Endowment Fund

Nancy Gardner Sewell Endowed Fund

Naomi Fauntleroy Scholarship Fund

The Boswell Family Next Step
Scholarship Award

Nola Williams/ Lambda Alpha
Omega Endowment Fund

Norma Jean Tucker Endowment Fund

Norma S. White Music Endowment Fund

Norman Jack Hayes Scholarship Fund

North Atlantic Diamond
Soror Endowment Fund

North Atlantic Region Catastrophic
Assistance Endowment Fund

North Atlantic Region Pearl
Soror Endowment Fund

North Atlantic Region Self Care
Fellowship Endowment Fund

Nu Gamma Omega Chapter
Scholars Award Fund

Nu Lambda Omega Scholarship Fund

Octavia Florence Michelle Legacy Fund

Odessa Nelson SAR Cluster
VII Endowment Fund

Omicron Eta Omega Scholarship
Endowment Fund

Omicron Omicron Omega
Endowment Fund

Ootsie, Lillian Dunn Thomas
Endowment Fund

Pamela A. Lazard Endowment Fund

Pamela Bates Porch Endowed
Scholarship Fund

Pamela Lynne Redden, MD,
Great Lakes Wellness Fund

Partica M. Batten Endowment Fund

Patricia and Theresa Massey
Endowment Fund

Patricia Ann Dawson Lee
Scholarship Fund

Patricia Petty Wilson Scholarship Fund

Pearl L. Harrison Fine Arts
Endowed Funds

Pearls of Loudoun / Psi Rho Omega
Chapter Endowment Fund

Pearls of Promise Foundations
Ivyletts Scholarship Fund

Peggy Lewis LeCompte Endowment Fund

Phi Epsilon Omega Chapter
P.E.A.R.L. Scholarship Fund

Phi Kappa Omega Chapter
EAF Scholarship Fund

Phi Lambda Omega Endowment Fund

Phi Phi Omega Scholarship

Phi Xi Omega Endowment Fund

Phyllis Eleanor Robinson
Endowment Fund

Pi Alpha Omega Chapter EAF
Endowed Scholarship Fund

Portentous Twist of 46 AKA Alpha
Chapter 1981 Endowment Fund

Portia L. Trenholm Endowment Fund

Psi Theta Omega Jannie Johnson
Mitchell Endowment Fund

Psi Zeta Omega Smoky Mountains
Pearls Endowment Fund

R. G Wilson Health Endowment Fund

Rachel Ashburn Mallory
Undergraduate Leadership
Development Scholarship Fund

Raygene C. Paige Endowment Fund

Rayverne Baskin Wilson
Endowment Fund

Reva W. Allman Endowment Fund

Rho Chi Omega Cultured Pearls
Endowment Scholarship Fund

Rho Delta Omega Chapter
Endowment Fund

Rho Omicron Omega Endowment Fund

Rho Pi Omega Sisterhood of
Service Endowment Fund

Rho Zeta Omega Chapter Endowed Fund

Rita White Roberts Scholarship Fund

Rose Butler Browne Endowed Fund

Ruby Batts Archie Endowment Fund

Rust College Endowed Scholarship Fund

Ruth C. Easley Gerontology
Scholarship Fund

Ruth Coleman Endowed Scholarship

Ruth Simmons Endowment Fund
 Sadie Sermon Mickle Hortense Caldwell-Harvey Endowment Scholarship Fund
 Sandi Sumbry (Miss Fashionetta) Pearls of Paradise Foundation Scholarship Fund
 Sandy M. Bonhomme and Sonya Jacinta Snedecor Fund
 SAR Cluster I Endowment Fund
 SAR Cluster II Endowment Fund
 SAR Cluster III Endowment Fund
 SAR Cluster IV Endowment Fund
 SAR Cluster V Endowment Fund
 SAR Cluster VI Endowment Fund
 SAR Cluster VIII Endowment Fund
 Sarah R. Simmons EAF Endowment in Memory of Jayne Doctor
 Sharon Brown Harriott Community College Access & Equity Endowment
 Shelby Robinson Boagni Bison Acheivers Fund
 Shining Light on Education Scholarship Endowment Fund- in honor of Rebecca Helms McKnight
 Shirley R. Fisher Endowment Fund
 Sigma Lambda Omega Endowed Scholarship Fund
 Sigma Zeta Omega Endowment Fund
 Solomon White Beta Alpha Leadership Fund
 Sonja W. Garcia / Stella J. Lett Undergraduate Leadership Endowment
 Sonya L. Bowen Endowment Fund
 Sorors of Gamma Theta Omega Chapter Scholarship Fund
 Sorors of South Carolina Endowment Fund
 South Atlantic Regional Conference Endowed Fund
 South Eastern Region Endowment Fund
 Susan Simms Marsh Endowment For Careers in Law
 Sweet Home Alabama Power of Us Scholarship Fund
 Taahsela K. Holton Memorial Scholarship
 Tanya M. Crossley Endowment Fund
 Tari T. Bradford Endowment Fund
 Tau Beta Omega Endowed Scholarship Fund
 The Barbara Denson Trotter Endowment Fund

The Charlene D. Carodine Endowed Scholarship Fund
 The Cultured Pearls of Tau Pi Omega
 The ELO Foundation Scholarship Fund
 The Geraldine Adams Care for Others Scholarship Fund
 The Great Lakes Rise up Endowment Fund
 The Honorable Dr. Barbara Odom-Wesley Spirit of Achievement Scholarship Fund
 The Honorable Elzie Odom Leader of Tomorrow Scholarship Fund
 The Joyce Rush Gilchrist Scholarship Fund
 Thelma K. Evans Cancer Research Endowment Fund
 Theta Mu Omega Eugenia Dean Scott Memorial Fund
 Theta Theta Omega Lois E. Bolden Memorial Scholarship Fund
 Tiffany Moore Russell, Legal Social Justice and Advocacy Endowment Fund
 Tondalaire Deon Ray Ashford Scholarship
 Toni S. Kendrick Educational Endowment Fund
 Tracey Morant Adams Scholarship Fund
 Twyla Woods Buford Endowment Fund
 Undergraduate Centennial Endowment Fund
 Undergraduate Flourish Launching New Dimensions Endowment Fund
 Undergraduate Global Leadership Endowment Fund
 Undergraduates Launching New Dimensions Endowment Fund
 Upsilon Alpha Omega Chapter/Beauty P. Baldwin Endowed Scholarship Fund
 Upsilon Tau Omega Scholarship Fund
 Vanessa Rogers Long Endowment Fund
 Velma Lois Jones EAF Endowment Fund
 Vera Forte McCain Endowed Funds

Verna H. Johnson Endowment Fund
 Vernell and Cynthia Trigg, Jr. Scholarship Endowment Fund
 Vertelle and James Middleton / Delores Ham Oliver Human Service Scholarship
 Vicki Miles LaGrange Endowment Fund
 Virginia F. Hightower Endowment Fund
 Wendye D. Mingo Information Technology Endowed Scholarship Fund
 Wilhelmina R. Delco Endowment Scholarship
 William Lewis Dawson Memorial Scholarship Fund for Theta Omicron Omega
 Willie Mae James Descendant(s) of Ishmael & Emily (Harvin) Taylor's "Mother to Son" Pathway Scholarship Fund
 Willie Mae James/Descendant(s) of Richmond + Mary (Carolina) James' And Still I Rise Pathway Scholarship Fund
 Wilma Allison Moore Endowed Scholarship Fund
 Wilma H. Tootle Scholarship Fund
 Xi Alpha Omega - ILECF Lasting Legacy Fund
 Yarbough And Paige Endowed Scholarship
 Yvonne Perkins Endowment Fund
 Zeta Delta FZDM EAF Scholarship Fund
 Zeta Rho Omega Endowment Fund



Kayla Atkinson
 2023 Graduate Scholar



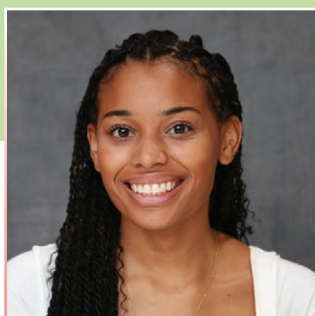
GREATER HEIGHTS IN ... Fellowships

EAF currently manages 60 Fellowship programs, with awards made in even-numbered years. Unlike traditional fellowships, EAF Fellowship Awards do not require enrollment in an academic institution. They are granted to individuals performing research and projects with practical applications for improving quality of life.

Since these awards began in 1995, EAF has been pleased to support a wide range of purposes, such as finding non-violent solutions to human disputes, conducting research on hypertension, and measuring the impact of nuclear testing on marine life.



**Kayla
Boykin**
2023
Fellowship
Recipient



**Alexis
Brown**
2023
Fellowship
Recipient



**Brooke
Foyles**
2023
Fellowship
Recipient

2023 FELLOWSHIPS

3M Fellowship Fund

44th President Barack and First Lady
Michelle Obama Fellowship Fund

Alabama A&M University Fellowship Fund

Alabama State University - My
ASU Fellowship Fund

Albany State University - Sigma
Gamma EAF Fellowship Fund

Ann McAllister Hughes
Foundation Fellowship Fund

Arlene M. Skinner Fellowship Fund

Avis Daisy Ellison Fellowship Fund

Barbara F. Sutton Business Fellowship Fund

Benedict College HBCU Honor
Roll Fellowship Fund

Bethune Cookman HBCU Honor
Roll Fellowship Fund

Betty Jean Johnson Wilson Memorial
Scholarship Fellowship Fund

Branching Out Fellowship Fund

Bringing Out the STEM Visionaries of the
World Claflin University Fellowship Fund

Capture the Promise Fellowship Fund

Chelle Wilson 2013 NOLA
Scholars Fellowship Fund

Chi Alpha Omega Fellowship Fund

Clark Atlanta University HBCU
Honor Roll Fellowship Fund

Dimensions of Lifelong Learning
Morris College Luns C. Richardson

HBCU Fellowship Fund

Dixon "Dare to be Different" Far
Western Region Fellowship Fund

Dr. Dorri Phipps Lupus Fellowship Fund

Dwana Lockett Fellowship Fund

Educational Enrichment "Think
HBCU" Fellowship Fund

Edward Waters College HBCU
Honor Roll Fellowship Fund

Fisk University HBCU Honor
Roll Fellowship Fund

Florida A&M University FAMU HBCU
Honor Roll Fellowship Fund

Florida Memorial University HBCU
Honor Roll Fellowship Fund

Fort Valley State HBCU Honor
Roll Fellowship Fund

General Member HBCU Student
Emergency Fund

Great Lakes Greater Together
Fellowship Fund

Hampton HBCU Honor Roll Fellowship Fund

Howard University HBCU Honor
Roll Fellowship Fund

Juanita A. Wilkinson Fellowship Fund

Julia Brogdon Purnell Fellowship Fund

Kafi Wilford Constantine Fellowship Fund

Kay Madry Sullivan Fellowship Fund

L.H. Gilliam, Leadership
Development Fellowship Fund

Lillie King Lewis Fellowship Fund

Margaret Blake Roach Mini-Grant Fund

Mid-Atlantic Diaster Relief Fund

Mississippi Scholarship Fund

Mona Calhoun HBCU Scholarship Fund

Moore Life Learning Fellowship Fund

Morehouse College HBCU Honor
Roll Fellowship Fund

Our Choice to Change the World
Spelman College Fellowship Fund

Rev. Rosa Clements - Millner
Fellowship Fund

Rosa Parks Fellowship Fund

Rosalind Barnes Griffin Endowed Fund

Savannah State University HBCU
Honor Roll Fellowship Fund

Schylbea Jean Hopkins Fellowship Fund

Sophia D. Babridge HBCU Fellowship Fund

South Atlantic Regional Conference
Chairman's Fellowship Award

South Carolina State University
Bulldog Tenacity Fellowship Fund

Tennessee State University Honor
Roll Fellowship Fund

The Charm City Pearls Foundation,
Incorporated / Psi Phi Omega Chapter
Higher Education Scholars Program Fund

Trotter Farwest Chapter Archives Award

Trotter Fellowship Fund

Tuskegee University Gamma
Kappa EAF Fellowship Fund

William Paterson University Alpha
Images Fellowship Fund

Xi Zeta Omega Fellowship Fund

GREATER HEIGHTS IN ... Undergraduate Programs

2023 YOUTH P.A.C. SCHOLARSHIP RECIPIENTS:



Erin Bell

University of Wisconsin-Whitewater



Madison Shelby

High Point University



Tania Smith

Spelman College



Nia Ulysse

University of Central Florida



Sheneka Williams

Meharry Medical College

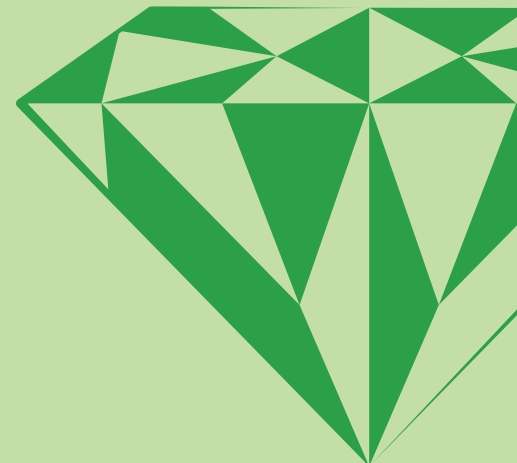


EAF SCHOLARSHIPS

To learn more about our scholarship programs, eligibility, and how to apply, visit us online at AKAEAF.org

The “Youth Partners Accessing Capital” program, known as Youth P.A.C., involves young people in the philanthropic process. Since 1997, it has provided awards and scholarships that support the healing, nurturing, learning, and uplifting of youth through development of lifelong learning skills. The program pays large dividends by developing trained, capable future leaders.

Youth P.A.C. is structured for undergraduate members of Alpha Kappa Alpha Sorority, Inc.[®] and its undergraduate chapters and is chaired by the Foundation’s Second Vice President.



GREATER HEIGHTS IN ... Community Assistance Programs

Community Assistance Awards assist “non profit” organizations implementing projects addressing one of the programmatic thrusts of Alpha Kappa Alpha Sorority, Inc.®



2023 AWARDEES

Cribs for Kids Program

The Cribs for Kids program is a community-based initiative aimed at reducing unsafe sleep environments and preventing accidental deaths and Sudden Infant Death Syndrome (SIDS) among infants. The program seeks to provide families in need with safe sleep education and portable cribs to ensure that infants have a safe place to sleep.



Aplus Technology Inc.

Aplus Technology Inc. is an instructional design, software, and information technology non-profit company. Aplus Technology Inc. creates courses for education, workforce development, and health care certification. The mission of Aplus Technology Inc. is to provide high-quality education and educational training to adults that will bridge the gap in diversity and inclusion of minorities in increasing skills to maintain high standards in the medical careers workforce by uplift our local community and building our economic wealth.



REBUILD, A Darkness Rising Program

REBUILD is a free program for formerly incarcerated individuals seeking therapists of color. REBUILD provides up to 10 sessions of free therapy for formerly incarcerated individuals of color. Currently, 5 part-time paid staff members and 2 full-time employees (all of whom are either formerly incarcerated people and/or have lived experiences with mental health challenges) assist in matching formerly incarcerated and justice-involved individuals with therapists of color. This assistance includes finding and vetting therapists, setting up appointments, and facilitating the payment process.



Four Girls For Girls



Our specialized Doula Training Program will provide the benefits of the care referenced above but will equip Doulas with clinical knowledge that will help them effectively navigate the medical landscape during all phases before and after pregnancy. This project will be a specialized program and will exceed the normal requirements of traditional Doula Training Programs.

Lambda Kappa Omega Chapter - CHIPP™ Hunger Initiative

Providing Weekend Meal Kits for Underprivileged Youth in Fairfax County, Virginia, Alpha Kappa Alpha Sorority, Incorporated®, Lambda Kappa Omega Chapter has partnered with Omicron Iota Chapter, George Mason University, to successfully launch its Childhood Hunger Initiative Power Pack (CHIPP) program in December 2022. The program is in response to the need for meal items for Black and Brown students at Riverside Elementary, a Title 1 school located in Fairfax County. Once a month, chapter members and community volunteers pack and distribute roughly 200 weekend meal kits. Each kit consists of two breakfasts, two dinners, two drinks, and two snack items. To date, over 1200 kits (made up of 4800 meals, 2400 snacks, and 2400 drinks) have been distributed.



MI-RAMP

The goal of the Michigan Reading and Math (STEM) Performance, MI-RAMP, program is to uplift marginalized children—ages 4 to 12—both educationally and socially.

Mommie and Me

In many inner-city neighborhoods, children's exploration beyond their immediate community is hindered by limited resources, routines, and financial constraints. Our project aims to break down these barriers by offering enriching extracurricular activities during the summer of 2024, which foster growth and broadening horizons during their formative years.



Pearls of Service Ivy League

The IVY LEAGUE is one of the foundation's signature community initiatives which stands for Investing Values in our Youth through Leadership, Guidance, Unity, and Empowerment. The IVY LEAGUE is a program designed to develop and cultivate youth in the Memphis community to become strong leaders, to choose positive lifestyles and to make wise decisions. Personalized programs and activities are designed to focus on self-reliance skills, academic achievement, and career development.

Sana Mare Limuru

The Sana Mare Limuru is an idea from groups in Europe. The overseas groups are professionals with a heart for the preservation of Oceans. They organize garbage collection and water clean-up exercises funded by friends and well-wishers. The Kenyan Chapter started two years ago and is led by indigenous people who are passionate about cleaning polluted rivers and dams.



Skyline Summit Park and Recreation

Skyline Summit Park and Recreation is a non-profit organization whose mission is committed to encouraging youth and families, including the underserved, to reach their full potential while participating in recreational and environmental activities in green outdoor spaces; and collaborating with schools, families, and community partners.

GREATER HEIGHTS IN ... Matching Gift Participation

EAF is grateful to those companies and organizations with matching gift programs that help to maximize our impact. Listed below are the companies currently providing matching gifts to employee donations.



2023 MATCHING GIFT COMPANIES

Abbvie, Inc.	Gartner	Norfolk Southern Railroad
AIG - American International Group	Google	Novartis Pharmaceuticals Corporation
AptarGroup Charitable Foundation	JPMorgan Chase	Peloton Interactive
Baker Hughes	LinkedIn	Rockwell Automation
BP Foundation, Inc.	Lockheed Martin Corporation	State Farm Insurance
Chevron Corporation	McKesson	The Boeing Company
ExxonMobil Foundation	Merck & Co., Inc	TIAA
Fleishman Consulting	Microsoft Giving Campaign	Verizon Foundation
	Netflix	

**COMPANY MATCHING
GIFTS CAN DOUBLE
YOUR EAF DONATION**

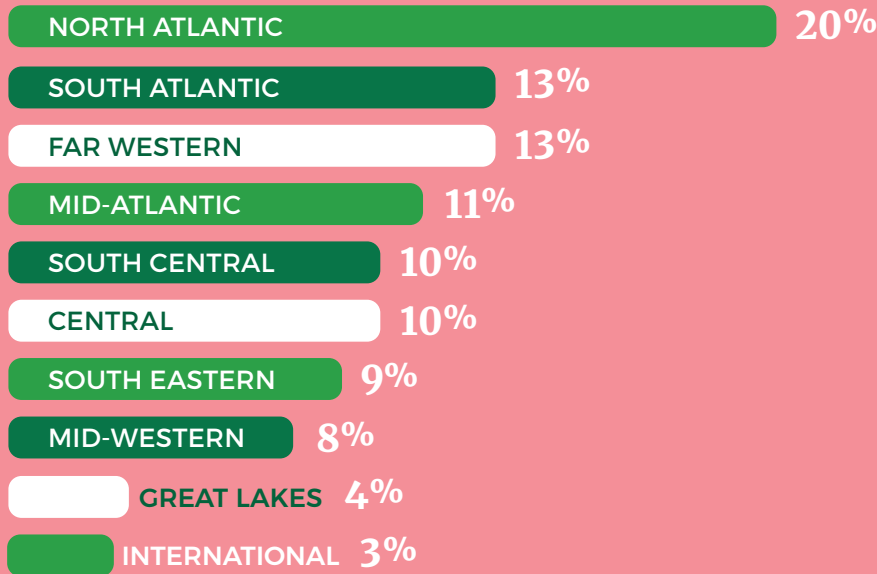
Please check with your company's Human Resources Department to determine if this option is available, and for the required documentation.

Chapman Janiya
2023 Undergraduate Scholar



GREATER HEIGHTS IN ... Scholarships

REGION



COMMUNITY ASSISTANCE AWARDS

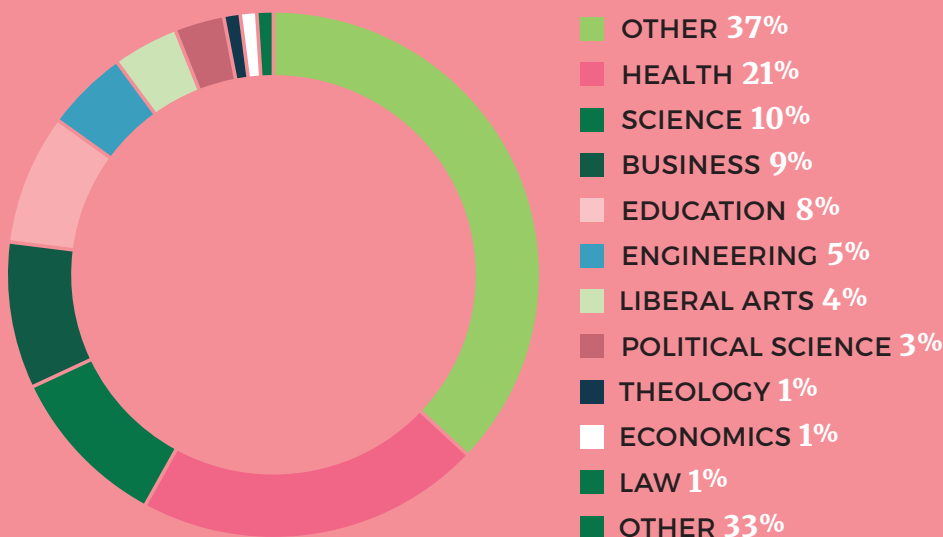


GREAT LAKES
NORTH ATLANTIC
MID-ATLANTIC



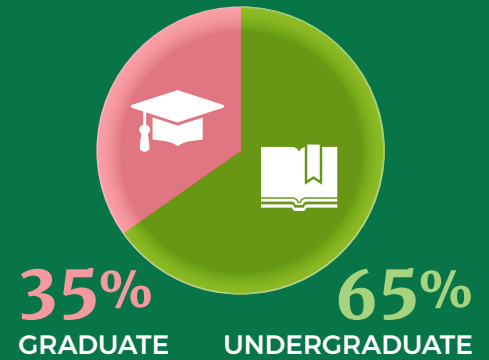
SOUTH ATLANTIC
SOUTH EASTERN
FAR WESTERN
INTERNATIONAL

MAJOR

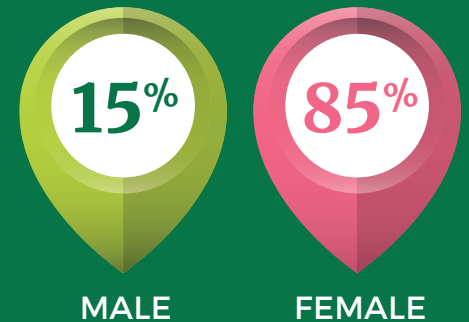


2023 AWARD STATISTICS

SCHOLARS

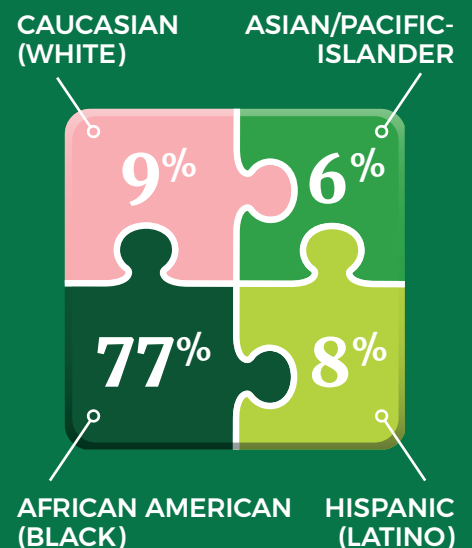


GENDER



ETHNICITY

VOLUNTARY ONLY



2023

Donors

GENERAL FUND DONATIONS

\$10,000 & ABOVEE*TRADE Financial
South Atlantic Region
TASC CFC**\$5,000 - \$9,999**Amazon Smile
Mildred S. Carrethers
Mid Atlantic Region
Mid Western Region
North Atlantic Region
South Eastern Region
Strada Education Network
Stripe
The Blackbaud Giving Fund**\$1,000 - \$4,999**Aquanetta J. Betts
Winnie M. Brinkley
Cameron Brown
Shawn P. Calhoun
Janet CARR
Ronicsa M. Chambers
Dainelle N. Clark
Tanya M. Crossley
Nichelle D. Dawkins
Stephanie Dawson
Sharon L. Dykes
Exelon
Far Western Region
Gail P. Forest
Vanessa Gilyard
Yvette L. Gray
Pamela Harmon
Rosalind R. Harper
Nicole Harris-Hollingsworth
Carolyn W. Hopkins
Lynnee D. Hopson
Doreathea Johnson
Kristol A. Johnson
Jasmine JohnsonDonna Lawson
Janelle Macklin
Jacqueline C. McGuire
Mechelle T. Moragne
Bevely Nash-Lowe
Network For Good
Gwendolyn Newkirk
Kimberly J. O'Bryant
Kathy R. Pettway
Sigma Chi
Tikishia Smiley
Crystal Staples
State Farm Insurance
Kay M. Sullivan
The Bank of America
Charitable Foundation
Gerald Tootle
United Way Of
Central Maryland
United Way of
Northeast Florida
Vickie L. Walker
Tishauna M. Washington
Elois H. Washington
Venita A. Wesley
Rose B. Williams
Maxine Wortham
Sharon Wright
Faquita E. Wright
Aundrea Young**\$500 - \$999**Libby Andrews-Simmons
Bertha S. Ballew
Camille R. Banks
Adrienne N. Barnes
Denise A. Beach Davis
Lisa H. Bennett
Shevawn Broxton Young
Angela D. Burnett
Melanie C. Butler
Gwen Chisholm-Smith
Harriett G. Church
Raynetta M. Collins
LaShonda CuretonMaya Dillard
ECMC Foundation
Kymberly D. Etheredge
LaWanda Evans
ExxonMobil Foundation
Angela D. Freeman
Renee Gaskin-Martin
Nakellia D. Gibson
Marilyn G. Graham-Sullivan
Valisha Graves
MaryAnn Harris
Janeen Hill
Judy Ingram
Joy Jackson-Guilford
Linda Johnson
Virginia Jones
JPMorgan Chase
Jacquelyn D. Kelley
Mina LaGrange
Lockheed Martin Corporation
Rhonda Luss
McKesson
Khea Y. Mallory
Roslyn W. McQueen
Veronica Parham-Dudley
Lachelle Porter-Ainer
Deon T. Retemeyer
Lawanda W. Reynolds
Jana T. Rittman
Emma M. Robinson
Kimberly W. Shorter
Valerie Smith
Sonya Stephens
Gwendolyn D. Taylor
The Dayton Foundation
Marcia L. Thomas
Patricia T. Toney
Jim Toth
Shondelyn L. Towner
United Way of Central
Minnesota
Rayondraeous White
Kathryn F. Worthen**\$100 - \$499**Regina Adams
Tiffany Adams
Valerie A. Adams Baker
Yvette A. Alexander Slate
Jennifer L. Allen
Mitzi Ambrose
Woodlhey Ambrosie
America's Charities
Jacqueline Anderson-Vaughn
Angel Andrews
Angela Anglin
Joan V. Antone
Hollie Ardoin
Theresa Austin
Caryn M. Bailey
Patricia A. Baker-Simon
Bank of America
Sharon S. Banks
Kimberly V Banks
Pamela E. Bartlett
Lenora I. Baytop
Jill Beckwith
Pat A. Beery
Traci E. Bell-Thomas
Beta Epsilon Omega
Amanda L. Blake
Gail V. Blue
Irma P. Bogan
Laura Boone
Lorelle E. Bradley
Rebecca C. Bradshaw Smith
Ginny Brien
Catina D. Broadway
Biddy Brooks
Gwendolyn Brown
Judith Brown
Norma A. Brown
Patty L. Brown
Sheila Brown
Whitney Brown
Bessie Brown
Yvonne C. Brown

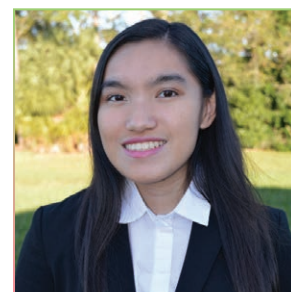
Carolyn Brown-Dancy	LaVerna L. Davis	Janel E. Greene	Mary Jackson
Christopher Bryant	Crystal N. Davis	Brenda C. Hampton	Donna Jackson
J Kamala Buckner	Connie Davis Powell Nichols	Jacinta Harden Hightower	Niki Jarrett
Mattie J. Burroughs	Eula Saxon S. Dean	Robert Harris	Icyphine Jessie
Birgit Burton	Darlene C. DeFour	Sparkle Harris	Barbara S. Johnson
LaTosha N. Busby Hemphill	Sandra Delancy	Carlean Harris	Courtnea S. Johnson
Carla C. Butler	Laura Dixon	Whitney Harrison Jackson	Demetria Johnson
Tjuana Byrd	Pamela N. Doss	Zelphia R. Hawkins	Kristen S. Johnson
Tracy E. Callwood	Donna Duckworth	Pamela P. Hayes	Marianne T. Johnson
Dawn Campbell	Catherine A. Duncan	Margie G. Hayes	Marilyn L. Johnson
Jan W. Carter	Cheryl Duncan	Althea T. Haylett	Carol Johnson
Central Indiana Community Foundation Inc.	Tiffani Eason	Amanda N. Heath	Brenda J. Johnson Corprew
Charities Aid Foundation	Temeka Easter Rice	Angela Y. Henderson	Andrea A. Jones
Sally H. Childs	Beverly A. Ebanks	Joyce Henderson	Lenny Jones
Elizabeth Childs	Tabitha Elien	Keshetta Henderson	Katherine Jordan
Natasha J. Chou	Elite Visions & Dreams, LLC	Stephanie Hendrix	Angela Kaiser
Mary M. Clark	Dorothy Emanuel Gardner	Lynette P. Henley	Tanya Kindrick
Dierdra Clark	Lydia M. Esdaile	Jamieka Hester	Juliet King
Pamela B. Clay	Kathi M. Evans	Marselle Heywood Julian	Keisha N. King
Deborah Clay	Leigh Evans	Jacqueline R. Hill	Priscilla G. King
Vernell Cloud	Kema W. Evans	Kristin Hill	Burlynda L. Knight
Crystal Cole	Annie Everett	Yvonne A. Holder	Latonia Knox
Lillian J. Collins	Anjelious Farmer	Andrea Hollingsworth	Regina Lance
Kalista Combs	Veatrice H. Farrell	Ursula Holmes	Sherell J. Laster
Community Foundation of Middle Tennessee	Linda L L. Felton	Regina Horne-Espree	Erika Lawrence
Aja Conard	Natalie D. Ferguson	Cheritta Hosch	Gladys T. Lee
Doris R. Conner	Carisma R. Fields	Melanie B. Hoskins	Ketra L. Lewis
Emma J. Conyers	Quindella T. Fletcher	Archella Howard	Gail G. Lewis
Clorisa L. Cook	Romy E. Florence	Rose M. Howell	Jacqueline R. Lewis-Kemp
Nadine Cook	Maria J. Floyd	Gwendolyn D. Hudson	Barbette A. Lherisson
Kim V. Cooley	Geraldine Foxall-Kater	Emma Huff	Remeka L. Little
Sandra Copeland	Latrice A. Franklin	Michelle Huff Elliott	Dana Lucas
Lorraine Corry-Moore	Gamma Delta Omega	Jacquelynn B M. Hugee	Tameka SiYan Lumas
Wanda W. Cox	Sherrell W. Ganges	Justin Huggins	Daphne N. Lusk
Pamela C. Craig	Chloe Garden	Arliana W. Humphrey	Leslie Lyles Smith
Sherell Crawford	Mildred Y. Gardner	Angel D. Hunter	Arnalda N. Magloire
Rhondalynn Crawford	Melissa Garrett	Margo V. Hurston-Peavy	Soror Kameelah S. Majied
Rona W. Creech	Shamia Garrett	Norma B. Hutcheson	Brenda S. Manuel
Luciana M. Crenshaw	NEISHA GEOFFROY	Rosa A. Ishmal	Michelle D. Mayfield
Paula S. Croom	Charla Glass	Cathy Ivey	Shaune R. Mayo-Andrews
Crystal D. Cross	Carmella Glover	Cronicle Ann Jackson	Nia Mcadoo
Sylvia Crowder	Sharoen E. Goodwin	Dianne B. Jackson	Jacqueline R. McCall
Charlotte L. Crowell	Shaana R. Gordon	Karla S. Jackson	Felecia McClellan
Donna L. Cunningham	Jackie L. Gorman	Maxine E. Jackson	Sherry A. McFadden
Wanda J. Curry	Dewanna Graham	Michelle Jackson	Cynthia McFarland
Rani Dasi	Teresa M. Greene	Monique Jackson	Leticia McGowan
	Jean Greene	Pamela L. Jackson	Delores Y. McKinley
	Lindsay N. Greene	Stephanie Jackson	Lora McLeod

Donna McRae-Jones
Monique Meese
Michelle P. Milburn
Cydonii Miles
Sharon E. Miller
Beverly C. Mims
Angela Y. Mitchell
Cordelia D. Mitchell
Tawakalitu J. Mitchell
TiAwna Moffatt Daniels
Carolyn C. Monson
Gina Monteiro
Mary F. Moore
Monet Moore
Alicia Morehead-Gee
Shawne Morgan
Estella L. Morris
Dranita L. Morrow
Vickie Morrow
Mu Lambda Omega
Mu Sigma Omega
Bonnie W. Murdah
Victoria Myers
Tamika Y. Nash
New York Life Insurance Co
Juanita B. Newton
Novartis Pharmaceuticals
Corporation
Ethlyn M. O'Garro
Omega Beta Omega
OneHope
Tasha Quinn-Osborne
Stacey M. Owens
Essie S. Pace
Annie S. Parker
Sakena Parker
Tara L. Parson
Karen G. Paschal
Paypal Giving Fund
Jacqueline L. Payne
Tracy A. Perrin
Margaret Pettigrew
Denise N. Pierce
Markey W. Pierre
Cristal Piper
Chrystal Porter
Traci Powell
Tanya Powell May

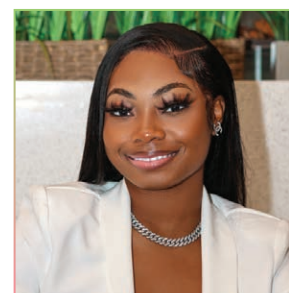
Marcia Preston
Karen Price
Progressive Insurance
Desiree A. Ralls-Morrison
Valerie Randall
Linnetta R. Ratliff
Barbara Reid
Elaine Rene
Destiny Reynolds
LaQuita Rhone
Irma M. Richardson
Lisa Rich-Milan
Andristine M. Robinson
Kim Rollins Davis
De Rose
Rosalind Ross
Annette Scott
Gina R. Scott
Yvonne M. Scott
Erin J. Searles
Sheri Sesay
Shannon S. Shareef
Lani Shaw
Vicky L. Shaw
Mary Sheridan
Tiffany Sherrell
Rashida R. Shorter
Jacqueline D. Shorter-Prather
Eddie Jean Simmons
Lisa M. Simmons
Melissa Brown Sladden
Ericka M. Smith
Mae H. Smith
Vivian L. Smith
Shiree M. Southerland
Bertha L. Sparks
Kimberly Spivey
Maryann Sprinkle-Walker
Jessica Stanford
Leah E. Stewart-McGregory
Cheryl D. Stokes
Torri Summers
Wanda Sutherland
Christil V. Taylor
Tracy A. Terrell
Theta Rho
Beverly Thomas
Deanna B. Thomas

Laurise A. Thomas
Robin R. Thomas
Margaret H. Thomas
Benita (Bunni) Thomas
Dana Thomas
Donna J. Thomas Marable
Lovetta W. Thompson
TIAA
Karen J Tillman
Leslye Tinson
Betty W. Tucker
United Way Of
Central Indiana
United Way Of The
National Capital Area
Donica T. Varner
Kelsey S. Victor
Alicia Wade
Tony Wakefield
Geneva Walker
Sanita M. Walker-Resper
Cyndi Washington
Felisha L. Washington
Karen N. Washington
Natalie Washington
Antoinette A. Washington
Clemontine F. Washington
Halcyon Washington
Jacqueline J. Watson
Velather Weaver
Diann G. West
Antoinette D. Weston
Barbara A. White
Barbara L L. White
Chantay P. White
Michelle White
Karen Y. White-Edwards
Kesia Wilkey
Linda J. Williams
Norma Williams
Robin J. Williams
Sabrina Williams
Cheryl C. Williams
Shirley T. Williams
Jovonda Williams
Karen A. Williams
June W. Williams Colman
Hazel A. Wilson

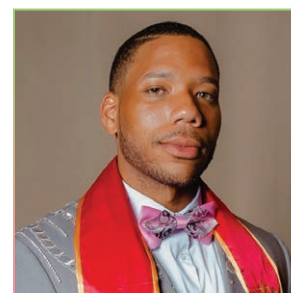
Jazz Wolk
Jennay Wood
Janice J. Woodard
Sharon K. Woodridge
Marilyn M. Woodruff
Lori L. Woodson
Mary L. Wright
Yvette M. Wynn
Vicki E. Young



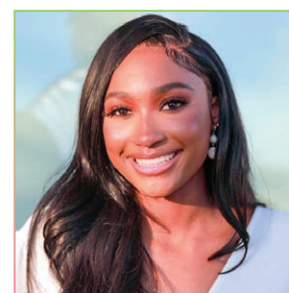
Demi Lance Dionela
2023 Undergraduate Scholar



Asianna Mashore
2023 Graduate Scholar



Dominique Jenkins
2023 Undergraduate Scholar



Amber Rogers
2023 Undergraduate Scholar



CHAPTER DONATIONS

\$1,000 OR MORE

CENTRAL

Alpha Beta Delta Omega
Alpha Mu Omega
Chi Chi Omega
Chi Omega Omega
Delta Chi Omega
Delta Delta Omega
Delta Phi Omega
Epsilon Epsilon Omega
Epsilon Kappa Omega
Eta Omega
Gamma Kappa Omega
Gamma Omega
Lambda Tau Omega
Omicron Eta Omega
Omicron Theta Omega
Theta Omega
Upsilon Mu Omega
Xi Nu Omega

FAR WESTERN

Alpha Alpha Iota Omega
Alpha Gamma Omega
Alpha Nu Omega
Delta Beta Omega
Delta Zeta Omega
Epsilon Xi Omega
Eta Gamma Omega
Eta Lambda Omega
Eta Nu Omega
Eta Rho Omega
Kappa Beta Omega
Mu Beta Omega
Mu Lambda Omega
Omega Delta Omega
Omega Omicron Omega
Psi Upsilon Omega
Rho Delta Omega
Sigma Pi Omega
Tau Upsilon Omega
Theta Alpha Omega
Theta Theta Omega

Xi Gamma Omega
Xi Kappa Omega
Zeta Omega Omega

GREAT LAKES

Alpha Alpha Omega
Alpha Omega
Alpha Omicron Omega
Alpha Rho Omega
Alpha Sigma Omega
Beta Beta Omega
Beta Eta Omega
Delta Nu Omega
Delta Psi Omega
Delta Tau Omega
Eta Iota Omega
Eta Upsilon Omega
Gamma Phi Omega
Iota Iota Omega
Iota Nu Omega
Iota Sigma Omega
Lambda Phi Omega
Lambda Pi Omega
Omega Epsilon Omega
Omega Xi Omega
Phi Psi Omega
Pi Tau Omega
Sigma Omega
Tau Alpha Omega
Tau Alpha Omega
Theta Chi Omega
Theta Lambda Omega
Xi Epsilon Omega
Zeta Alpha Omega
Zeta Theta Omega

INTERNATIONAL

Phi Omicron Omega
Pi Upsilon Omega
Rho Nu Omega
Sigma Theta Omega

MID-ATLANTIC

Alpha Alpha Chi Omega
Alpha Beta Alpha Omega
Alpha Lambda Omega
Alpha Phi Omega
Alpha Psi Omega
Alpha Theta Omega
Alpha Zeta Omega
Beta Iota Omega
Chi Omega
Chi Rho Omega
Delta Omega
Delta Xi Omega
Eta Beta Omega
Eta Omicron Omega
Gamma Beta Omega
Gamma Delta Omega
Gamma Upsilon Omega
Iota Kappa Omega
Iota Omega
Lambda Kappa Omega
Lambda Omega
Mu Omicron Omega
Omega Lambda Omega
Omega Rho Omega
Omicron Chi Omega
Omicron Omega Omega
Omicron Pi Omega
Phi Omega
Pi Rho Omega
Psi Rho Omega
Rho Eta Omega
Rho Psi Omega
Sigma Iota Omega
Sigma Tau Omega
Tau Phi Omega
Upsilon Kappa Omega
Upsilon Omega
Xi Phi Omega
Xi Upsilon Omega
Zeta Chi Omega
Zeta Kappa Omega
Zeta Mu Omega
Zeta Pi Omega

MID-WESTERN

Alpha Chi Omega
Beta Omega
Beta Sigma Omega
Epsilon Nu Omega
Iota Beta Omega
Mu Omega
Mu Omega Omega
Theta Upsilon Omega
Xi Tau Omega

NORTH ATLANTIC

Alpha Alpha Lambda Omega
Alpha Beta Pi Omega
Beta Alpha Omega
Delta Mu Omega
Delta Pi Omega
Epsilon Iota Omega
Epsilon Omicron Omega
Eta Omega Omega
Iota Epsilon Omega
Iota Gamma Omega
Iota Lambda Omega
Iota Tau Omega
Kappa Theta Omega
Nu Xi Omega
Nu Zeta Omega
Omega Eta Omega
Omega Mu Omega
Omega Omega
Omega Psi Omega
Omega Zeta Omega
Omicron Gamma Omega
Omicron Upsilon Omega
Omicron Xi Omega
Phi Beta Omega
Pi Iota Omega
Pi Pi Omega
Psi Epsilon Omega
Psi Iota Omega
Psi Iota Omega
Psi Lambda Omega
Psi Omega
Rho Gamma Omega

Rho Kappa Omega
Rho Mu Omega
Rho Theta Omega
Rho Xi Omega
Sigma Psi Omega
Sigma Zeta Omega
Tau Delta Omega
Tau Nu Omega
Tau Omega
Theta Epsilon Omega
Theta Iota Omega
Theta Kappa Omega
Theta Pi Omega
Theta Psi Omega
Upsilon Delta Omega
Upsilon Epsilon Omega
Upsilon Tau Omega
Xi Chi Omega
Xi Omega
Xi Sigma Omega
Xi Zeta Omega
Zeta Omega

 **SOUTH ATLANTIC**

Alpha Alpha Epsilon Omega
Alpha Alpha Pi Omega
Alpha Alpha Theta Omega
Beta Zeta Omega
Chi Psi Omega
Chi Tau Omega
Delta Eta Omega
Delta Kappa Omega
Epsilon Beta Omega
Epsilon Chi Omega
Epsilon Omega Omega
Epsilon Tau Omega
Eta Alpha Omega
Eta Eta Omega
Eta Zeta Omega
Gamma Nu Omega
Gamma Rho Omega
Gamma Sigma Omega
Gamma Tau Omega
Gamma Theta Omega
Gamma Xi Omega
Gamma Zeta Omega
Iota Pi Omega
Kappa Kappa Omega

Kappa Omicron Omega
Kappa Upsilon Omega
Lambda Epsilon Omega
Lambda Iota Omega
Lambda Xi Omega
Mu Iota Omega
Nu Alpha Omega
Nu Beta Omega
Nu Lambda Omega
Nu Tau Omega
Omega Phi Omega
Omega Tau Omega
Omicron Rho Omega
Phi Phi Omega
Phi Pi Omega
Phi Tau Omega
Pi Alpha Omega
Pi Eta Omega
Psi Alpha Omega
Psi Omega Omega
Psi Theta Omega
Rho Rho Omega
Sigma Alpha Omega
Sigma Epsilon Omega
Sigma Omega Omega
Sigma Omicron Omega
Tau Epsilon Omega
Tau Omicron Omega
Tau Pi Omega
Theta Omicron Omega
Theta Xi Omega
Upsilon Alpha Omega
Upsilon Xi Omega
Xi Beta Omega
Xi Pi Omega
Zeta Rho Omega
Zeta Tau Omega
Zeta Upsilon Omega
Zeta Xi Omega

 **SOUTH CENTRAL**

Alpha Alpha Eta Omega
Alpha Alpha Nu Omega
Alpha Alpha
Omicron Omega
Alpha Beta Iota Omega
Alpha Beta Omega
Alpha Beta Phi Omega

Alpha Kappa Omega
Alpha Tau Omega
Alpha Xi Omega
Beta Mu Omega
Beta Psi Omega
Chi Omicron Omega
Chi Zeta Omega
Delta Omega Omega
Gamma Eta Omega
Mu Kappa Omega
Mu Theta Omega
Nu Gamma Omega
Omega Alpha Omega
Omicron Lambda Omega
Omicron Mu Omega
Omicron Tau Omega
Phi Alpha Omega
Phi Xi Omega
Pi Chi Omega
Psi Mu Omega
Sigma Rho Omega
Tau Rho Omega
Tau Zeta Omega
Upsilon Lambda Omega
Xi Alpha Omega
Xi Theta Omega

 **SOUTH EASTERN**

Alpha Alpha Gamma Omega
Alpha Alpha Zeta Omega
Beta Delta Omega
Beta Epsilon Omega
Beta Nu Omega
Beta Xi Omega
Delta Theta Omega
Eta Theta Omega
Eta Xi Omega
Gamma Alpha Omega
Iota Delta Omega
Kappa Alpha Omega
Kappa Pi Omega
Lambda Zeta Omega
Mu Sigma Omega
Omega Chi Omega
Omicron Alpha Omega
Omicron Omega
Phi Lambda Omega
Pi Nu Omega

Pi Omega
Upsilon Eta Omega
Upsilon Psi Omega
Xi Lambda Omega

\$25 - \$999
 **CENTRAL**

Alpha Beta Zeta Omega
Beta
Beta Epsilon
Beta Gamma Omega
Beta Rho Omega
Beta Upsilon Omega
Chi Alpha Omega
Chi Sigma Omega
Delta Beta
Delta Omicron
Epsilon Delta
Epsilon Eta
Epsilon Iota
Epsilon Lambda Omega
Epsilon Xi
Eta Kappa Omega
Kappa Psi Omega
Kappa Tau Omega
Lambda Alpha Omega
Lambda Mu Omega
Lambda Xi
Mu Delta Omega
Mu Rho
Nu Lambda
Nu Pi Omega
Omicron Alpha
Omicron Delta Omega
Omicron Phi Omega
Omicron Sigma Omega
Phi Epsilon Omega
Phi Kappa Omega
Pi Gamma Omega
Pi Lambda Omega
Pi Nu
Sigma Phi Omega
Tau Gamma Omega
Upsilon Phi Omega

 **FAR WESTERN**

Alpha Nu
Beta Theta
Chi Kappa Omega
Delta Upsilon Omega
Eta Epsilon Omega
Eta Sigma
Iota Beta
Iota Omicron Omega
Iota Tau
Ivy Heritage Foundation
Kappa Gamma Omega
Kappa Omega Omega
Kappa Xi
Mu Epsilon Omega
Mu Iota
Pi Sigma Omega
Rho
Sigma Lambda Omega
Sigma Pi Omega
Tau Beta Omega
Tau Kappa
Tau Tau Omega
Theta Mu Omega
Upsilon Epsilon
Xi Beta
Xi Pi
Zeta Alpha

 **GREAT LAKES**

Alpha Beta Beta Omega
Alpha Lambda
Beta Lambda Omega
Beta Mu
Beta Xi
Delta Delta
Delta Phi
Delta Pi
Epsilon Chi
Epsilon Mu Omega
Iota Iota
Iota Upsilon
Lambda Mu
Mu Alpha Omega
Omega
Omicron
Omicron Nu Omega

Pi Gamma
Psi Kappa Omega
Rho Omega
Sigma Mu Omega
Tau Lambda Omega
Theta
Xi Phi
Zeta

 **INTERNATIONAL**

Eta Psi Omega
Mu Gamma Omega
Rho Omicron
Rho Xi
Sigma Xi Omega

 **MID-ATLANTIC**

Alpha Chi
Alpha Eta
Alpha Phi
Alpha Xi
Beta Chi Omega
Beta Rho
Chi Beta Omega
Delta Alpha
Delta Epsilon
Epsilon Phi Omega
Gamma Gamma Omega
Gamma Iota Omega
Gamma Lambda
Kappa Delta Omega
Kappa Gamma
Kappa Iota Omega
Kappa Omicron
Kappa Rho Omega
Lambda Chi
Lambda Delta
Lambda Delta Omega
Lambda Lambda Omega
Lambda Psi Omega
Lambda Upsilon Omega
Nu Chi
Nu Epsilon
Nu Eta Omega
Omega Kappa Omega
Omega Sigma Omega
Omicron Epsilon

Omicron Phi
Omicron Sigma
Phi Chi Omega
Pi Epsilon Omega
Psi Gamma Omega
Psi Psi Omega
Psi Sigma Omega
Rho Alpha Omega
Rho Mu
Rho Omega Omega
Sigma Alpha
Sigma Kappa Omega
Sigma Mu
Sigma Psi
Tau Beta
Tau Mu Omega
Tau Zeta
Theta Beta Omega
Theta Kappa
Theta Phi
Theta Pi
Theta Rho
Upsilon Beta
Upsilon Omicron Omega
Xi Rho Omega
Zeta Epsilon Omega
Zeta Omicron Omega

 **MID-WESTERN**

Alpha Alpha Alpha Omega
Alpha Epsilon Omega
Alpha Iota Omega
Delta
Delta Epsilon Omega
Epsilon Alpha
Gamma Beta
Iota Zeta Omega
Mu Eta Omega
Omega Nu Omega
Psi Chi Omega
Sigma Sigma Omega
Upsilon Rho Omega
Upsilon Theta Omega

 **NORTH ATLANTIC**

Alpha
Alpha Alpha Sigma Omega
Alpha Alpha Tau Omega
Alpha Beta Gamma Omega
Alpha Beta Upsilon Omega
Chi Theta Omega
Delta Gamma
Delta Iota
Delta Mu
Epsilon
Epsilon Sigma Omega
Epsilon Upsilon Omega
Iota Alpha Omega
Ivy Rose Foundation Inc.
Lambda
Lambda Beta
Lambda Gamma
Lambda Omega Omega
Mu Delta
Omega Pi Omega
Omicron Eta
Omicron Pi
Phi Eta Omega
Pi Chi
Pi Iota
Pi Kappa
Pi Theta
Pi Xi Omega
Psi Phi Omega
Tau Theta
Theta Epsilon Omega
Theta Nu
Theta Omega Omega
Theta Phi Omega
Theta Tau Omega
Upsilon Gamma
Upsilon Theta
Xi Delta Omega
Xi Xi Omega

 **SOUTH ATLANTIC**

Alpha Alpha Beta Omega
Alpha Alpha Phi Omega
Alpha Beta
Alpha Beta Eta Omega
Alpha Beta Lambda Omega

Beta Sigma
Chi Gamma Omega
Chi Lambda Omega
Chi Pi Omega
Chi Upsilon Omega
Delta Iota Omega
Eta Iota
Eta Nu
Eta Tau Omega
Gamma Nu
Gamma Pi Omega
Gamma Sigma
Iota Omega Omega
Iota Upsilon Omega
Kappa Eta
Kappa Eta Omega
Kappa Sigma Omega
Kappa Upsilon
Lambda Lambda
Lambda Rho Omega
Lambda Theta
Mu
Mu Phi Omega
Mu Pi
Nu Delta Omega
Nu Gamma
Nu Omega Omega
Phi Delta Omega
Phi Omega Omega

Pi Beta Omega
Pi Phi
Pi Psi
Pi Zeta Omega
Psi
Psi Pi Omega
Rho Eta
Rho Pi
Rho Sigma Omega
Rho Tau
Rho Zeta
Rho Zeta Omega
Sigma Nu
Sigma Upsilon Omega
Sigma Xi
Tau Chi Omega
Tau Pi
Tau Theta Omega
Theta Gamma
Upsilon Nu
Xi Omega Omega
Xi Omicron Omega
Zeta Upsilon

SOUTH CENTRAL

Alpha Alpha Rho Omega
Alpha Alpha Xi Omega
Beta Kappa
Beta Pi Omega
Chi Eta Omega
Delta Xi
Epsilon Psi Omega
Epsilon Theta Omega
Epsilon Zeta Omega
Gamma Omega Omega
Gamma Omicron Omega
Gamma Psi
Iota Zeta
Lambda Sigma Omega
Omicron Iota Omega
Phi Zeta Omega
Pi Chi Omega
Rho Omicron Omega
Sigma Beta Omega
Zeta Gamma
Zeta Phi Omega

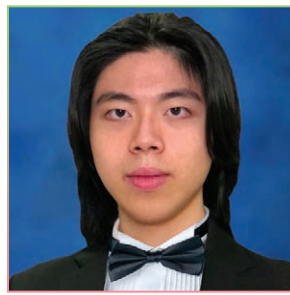
Alpha Beta Xi Omega
Beta Tau
Iota Phi
Kappa Lambda Omega
Lambda Eta Omega
Mu Tau Omega
Mu Xi Omega
Nu Delta
Nu Epsilon Omega
Nu Nu Omega
Nu Omicron
Nu Sigma Omega
Omicron Beta Omega
Omicron Zeta
Phi Iota Omega
Phi Mu Omega
Phi Upsilon Omega
Psi Omicron Omega
Psi Xi Omega
Psi Zeta Omega
Rho Chi Omega
Theta Eta Omega
Theta Zeta Omega
Upsilon Chi Omega
Upsilon Upsilon Omega
Zeta Delta Omega
Zeta Eta Omega

SOUTH EASTERN

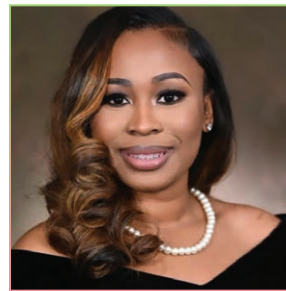
Alpha Beta Kappa Omega
Alpha Beta Mu Omega
Alpha Beta Nu Omega
Alpha Beta Theta Omega



Cielo Sanchez
2023 Undergraduate Scholar



Daniel Juan
2023 Undergraduate Scholar



Aniyah Yisrael
2023 Graduate Scholar



DaNae Harrison
2023 Undergraduate Scholar

Thank You to our Generous Donors!

GREATER HEIGHTS IN ... Leadership

2022-2024 BOARD OF DIRECTORS

Danette Anthony Reed
» PRESIDENT

Glenda Glover
» THIRD VICE PRESIDENT

Charletta Wilson Jacks
» FIRST VICE PRESIDENT

Carolyn G. Randolph
» SECRETARY

Alysse Guerrier
» SECOND VICE PRESIDENT

Karla A. Hall
» TREASURER

Mildred S. Carrethers
» AT-LARGE DIRECTOR

Jacquelyn Lewis Young
» AKA EXECUTIVE DIRECTOR

Leslie F. Daniel
» AT-LARGE DIRECTOR

Erika V. Everett
» EAF EXECUTIVE DIRECTOR

Lynn Farris
» AT-LARGE DIRECTOR

Martha Perine Beard
» PARLIAMENTARIAN

Jacquie Jordan
» AT-LARGE DIRECTOR

Lorraine Griffin Johnson
» HUMAN RESOURCES
COMMITTEE CHAIRMAN

Jenell Ross
» AT-LARGE DIRECTOR

The Alpha Kappa Alpha Educational Advancement Foundation, Inc.® (EAF) is a 501(c)(3) organization, established by Alpha Kappa Alpha Sorority, Inc.® The Foundation and the Sorority share officers, elected by membership of the Sorority to serve 4-year terms.



2022-2024 REGIONAL COORDINATORS

Arla J. Bentley
» *North Atlantic*

Chiquita V. White
» *Great Lakes*

Deondra R. Wardelle
» *Central*

Johari H. Leaks
» *Far Western*

Crystal D. Lander
» *Mid Atlantic*

Toni W. Franklin
» *South Eastern*

April F. Sutherland
» *Mid-Western*

Marcelle G. Yhap Abdullah
» *International*

Crystal Pruitt
» *South Atlantic*

Robyn S. McCormick
» *South Central*

AKA EDUCATIONAL ADVANCEMENT FOUNDATION STAFF

Erika V. Everett

» EXECUTIVE DIRECTOR

Gregory Williams

» FINANCE MANAGER

Aprell Bordelon

» EXECUTIVE ASSISTANT

Schoquilla “Que” Coleman

» PROGRAM COORDINATOR

Rachel Dixon

» ENDOWMENT PROGRAM
COORDINATOR

Antoinette James

» CASH MANAGEMENT COORDINATOR

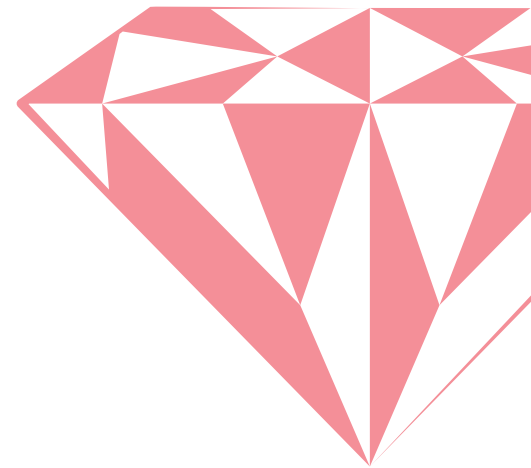
Velma Williams

» MEMBERSHIP
COORDINATOR



CORPORATE OFFICE

5656 South Stony Island Avenue
3rd Floor • Chicago, IL 60637





Promoting Lifelong Learning





ALPHA KAPPA ALPHA EDUCATIONAL ADVANCEMENT FOUNDATION, INC.[®]

5656 South Stony Island Avenue
3rd Floor · Chicago, IL 60637

OFFICE: **800-653-6528** OR **773-947-0026**

FAX: 773-947-0277 | EMAIL: akaeaf@akaeaf.net

www.AKAEAF.org

FOLLOW US ON SOCIAL MEDIA:

